

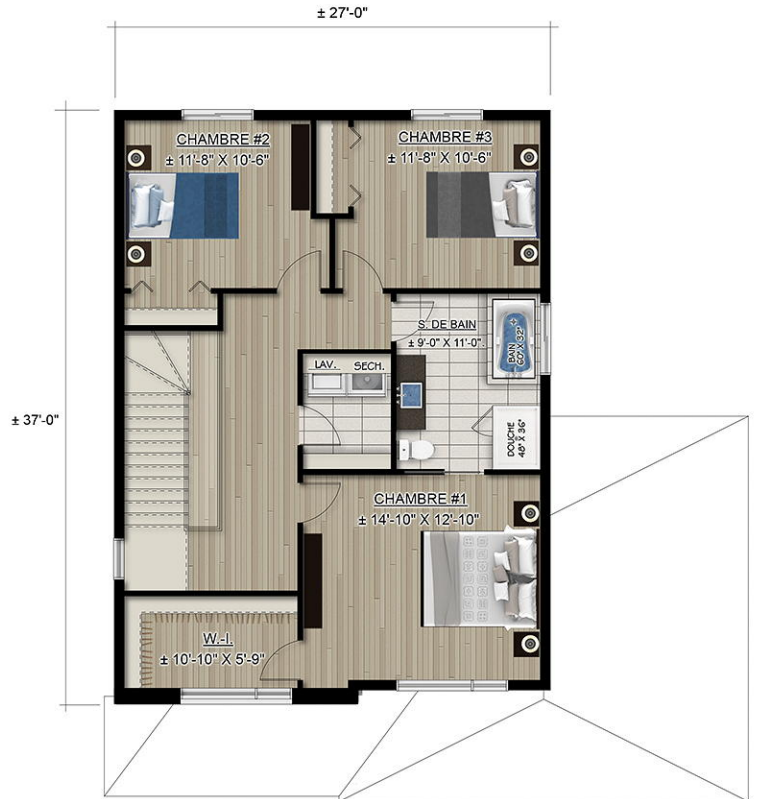


  
 CONSTRUCTION  
**INTEMPORELLE**

# STOCKHOLM



REZ-DE-CHAUSÉE  
 SUP. TOTALE: ± 792 pi.ca.  
 GARAGE: ± 504 pi.ca.



ÉTAGE  
 SUP. TOTALE: ± 987 pi.ca.